

# HME Compact Interface Relay



Technical Datasheet

## Key Features

- Compact Design, Easy Installation
- Related Load: 2C 8A
- High Sensitivity
- Manual Button & Latch
- Mechanical Indicator Window & LED Indicator
- Industrial Flat Pin Connections
- AC (Red Latch) & DC (Blue Latch) Versions



## Options & Ordering Codes

**HME - 2 1 - PN / 24DC**

|                            |          |
|----------------------------|----------|
| <b>Contact Arrangement</b> |          |
| 2 Pole Changeover (CO)     | <b>2</b> |
| <b>Connection Type</b>     |          |
| Plug-In                    | <b>1</b> |

|                     |         |
|---------------------|---------|
| <b>Coil Voltage</b> |         |
| <b>12DC</b>         | 12V DC  |
| <b>24DC</b>         | 24V DC  |
| <b>48DC</b>         | 48V DC  |
| <b>24AC</b>         | 24V AC  |
| <b>110AC</b>        | 110V AC |
| <b>230AC</b>        | 230V AC |

|                          |   |
|--------------------------|---|
| <b>Standard Function</b> |   |
| <b>PN</b>                | Mechanical Indicator / Test Latch LED                 |
| <b>PNG</b>               | Mechanical Indicator / Test Latch LED with Gold Flash |

## Contact Data

|                        |                         |
|------------------------|-------------------------|
| Contact Arrangement    | 2P Changeover           |
| Contact Material       | Ag Alloy                |
| Contact Rating         | 8A                      |
| Rated Voltage          | 250VAC / 30VDC          |
| Max. Switching Voltage | 275VAC / 33VDC          |
| Max. Switching Power   | 3000VA / 360W           |
| Coil Resistance        | ≥ 50mΩ                  |
| Mechanical Life        | ≥ 1x10 <sup>7</sup> OPS |
| Electrical Life        | ≥ 1x10 <sup>5</sup> OPS |

## Characteristics

|                                   |                            |              |
|-----------------------------------|----------------------------|--------------|
| Insulation Resistance             | 1000mΩ (at 500VDC)         |              |
| Dielectric Strength               | Between Coil & Contacts    | 5000VAC 1min |
|                                   | Between Open Contacts      | 1000VAC 1min |
|                                   | Between Contact Sets       | 3000VAC 1min |
| Operate Time (at nominal voltage) | ≤ 20ms                     |              |
| Release Time (at nominal voltage) | ≤ 10ms                     |              |
| Ambient Temperature               | -40°C to 55°C              |              |
| Humidity                          | 5% to 85% RH               |              |
| Atmospheric Pressure              | 86 to 106KPa               |              |
| Vibration Resistance              | 10Hz to 55Hz 1.0mm DA      |              |
| Shock Resistance                  | 1000m/s <sup>2</sup> (10G) |              |
| Unit Weight                       | Approx. 20g                |              |

## Coil Data

at 23°C

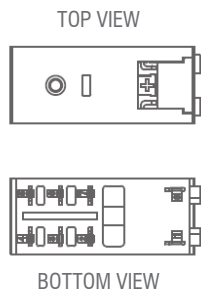
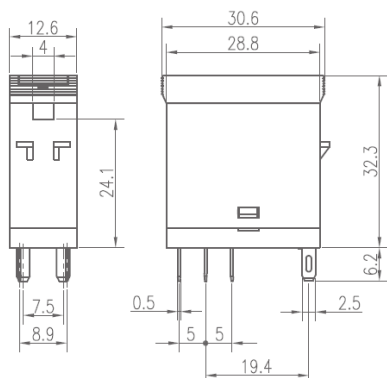
| Nominal Voltage VDC | Coil Resistance Ω | Nominal Voltage VAC | Coil Resistance Ω |
|---------------------|-------------------|---------------------|-------------------|
| 12                  | 270 (1±10%)       | 24                  | 240 (1±10%)       |
| 24                  | 1100 (1±10%)      | 110                 | 6300 (1±10%)      |
| 48                  | 4300 (1±10%)      | 230/240             | 23000 (1±10%)     |

## Coil

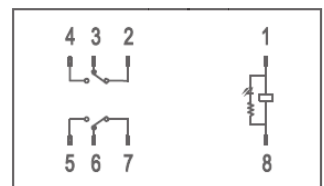
|            |         |       |
|------------|---------|-------|
| Coil Power | DC Type | 0.53W |
|            | AC Type | 1.0VA |

PLEASE NOTE: Above voltage versions available from stock. Other voltages available to order.

## Dimensions (mm)



## Wiring Diagram



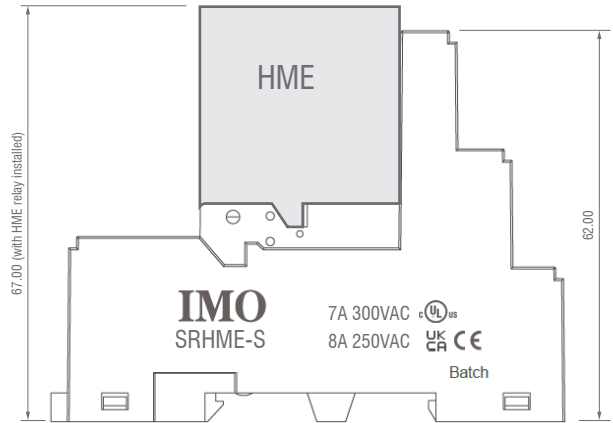
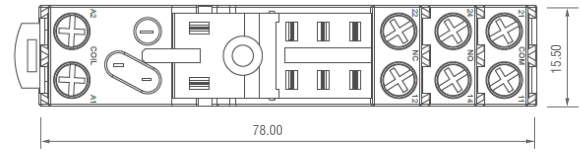
# HME Compact Interface Relay



Technical Datasheet

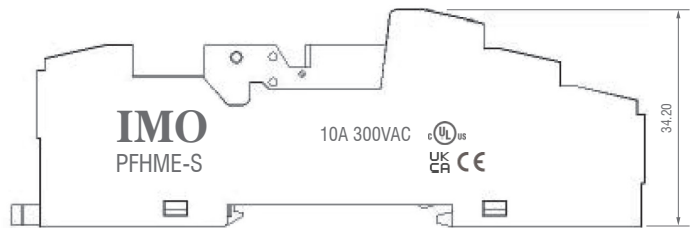
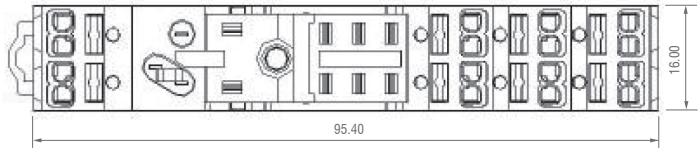
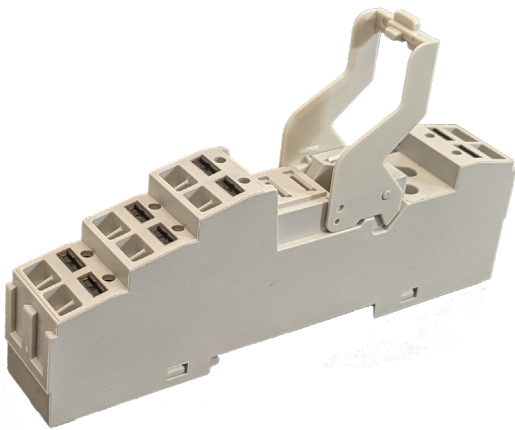
## Relay Base - SRHME-S

For Single-Sided Wiring of the Contacts (coil on the bottom, com and contact on the top).  
Comes with marking label as standard



## Relay Base - PFHME-S

Push Fit terminals permit quick connection of solid or ferruled wires.



## Various Plug-In Modules available upon request

